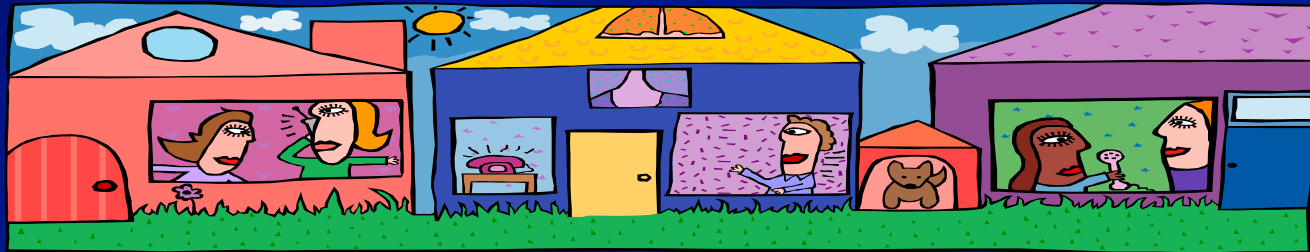


Community Engagement Part I



Introductions

- Tell us your name
- Where you work
- Where you were born
- Where you live
- One group you belong to



Introductions II

- Your name?- Community Identifier
- Where you work? Week-day Community
- Where you were born- Community of Origin
- Where you live- Community of Geography
- One group you belong to- Community of Interest

PERFORMANCE OBJECTIVES

At the end of this module participants will be able to:

- **Define community**
- **Understand the role of community with clients, victims and the agency**
- **Understand the connection of NeOn with communities and the strengths of community involvement with offenders.**

What is Community?

- Local phenomenon
- Fluid concept
- Informal actions
- Personal and social relationships
- Defined by who is included as well as who is excluded.
- May be voluntary or by virtue of personal characteristics such as gender, faith, age

Community

A group of people with a shared interest
or common characteristic....



What IS “Community”?

- **Geographically defined units (cities, towns)**
- **Families and extended families**
- **Religious congregations**
- **Schools and colleges**
- **Workplace**
- **Union locals**
- **Clubs, lodges, hobby groups**
- **Professional groups**
- **Political groups or parties**
- **Voluntary groups, e.g., youth service organizations**
- **Neighborhoods**



From: John Gardner, *On Leadership*

Community of Place

- Crime generally affects those living in the surrounding geographic area.
- In those communities most impacted by crime, many residents do not have a lot of mobility.
- The process of raising children is heavily influenced by the place in which they are raised.
- For most people, the sense of safety is related to place.



Community Definition

- Definition: “ System composed of individual members and sectors that have a variety of distinct characteristics and interrelationships. Each sector operates within specific boundaries to meet the needs of its members and the sector it is designed to benefit.”

Thompson

Community by Sector or Function

- A community can be viewed as a living being composed of sectors.

Schools- sector focused on education

Transportation- sector focused on moving people

Enterprise- focused on employment, economics and goods

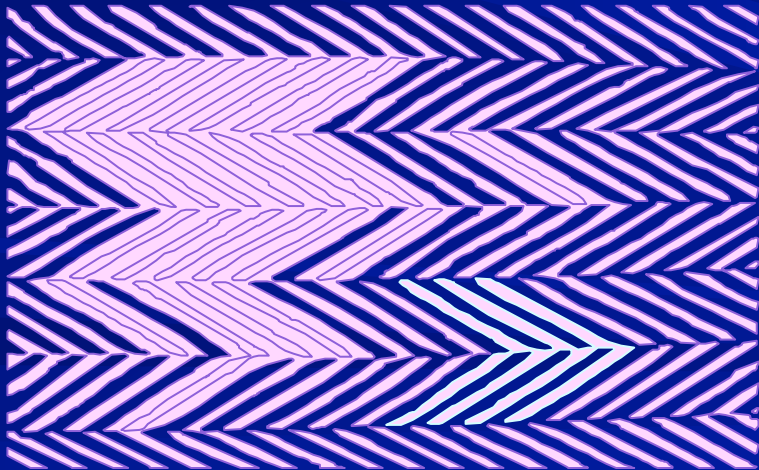
Health Care- focused on prevention and treatment of disease.

Each sector must be healthy for the living being to function.

Mutual responsibility . . .

between individual and community

is the loom on which the fabric of
community is woven



LINKAGES ARE THE KEY

Neighborhood Opportunity Network (NeON)

- NeOn is a network of community organizations, government agencies, local businesses and community residents focused on connecting probation clients who live in the target neighborhood to opportunities, resources and services...
- It serves People on Probation within their community.

What is in NeON for the Community?

- Opportunity to know all community members
- Opportunity to use client strengths for community benefit
- Opportunity for a new member of the local network- NYC Probation
- Opportunity to hire new workers
- Opportunity to prevent future crime

Exercise

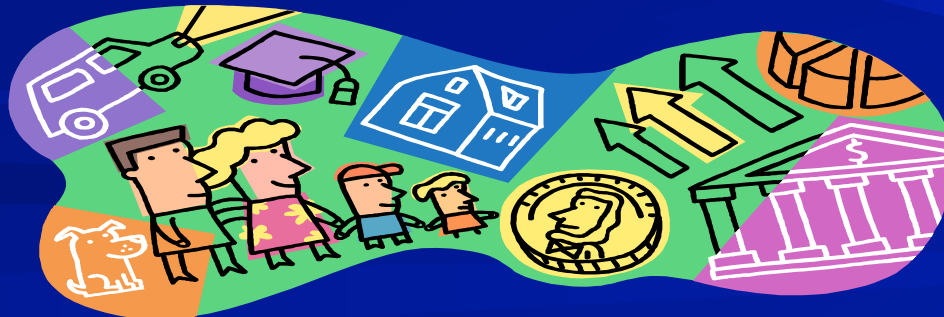
Please answer the following questions at your table:

- What does NeOn offer the Community?
- What does NeOn offer the Clients?
- What does NeOn offer Victims?
- What does NeOn offer NYC Probation?

What the Community Needs:

The community needs and expects:

- Crime to be sanctioned.
- Offenders to be rehabilitated and reintegrated and contributing members of the community.
- Community needs economic contributors – tax base increases as more community members work.
- The community to be safe and establish acceptable codes of conduct for members.



What is in NeOn for Clients

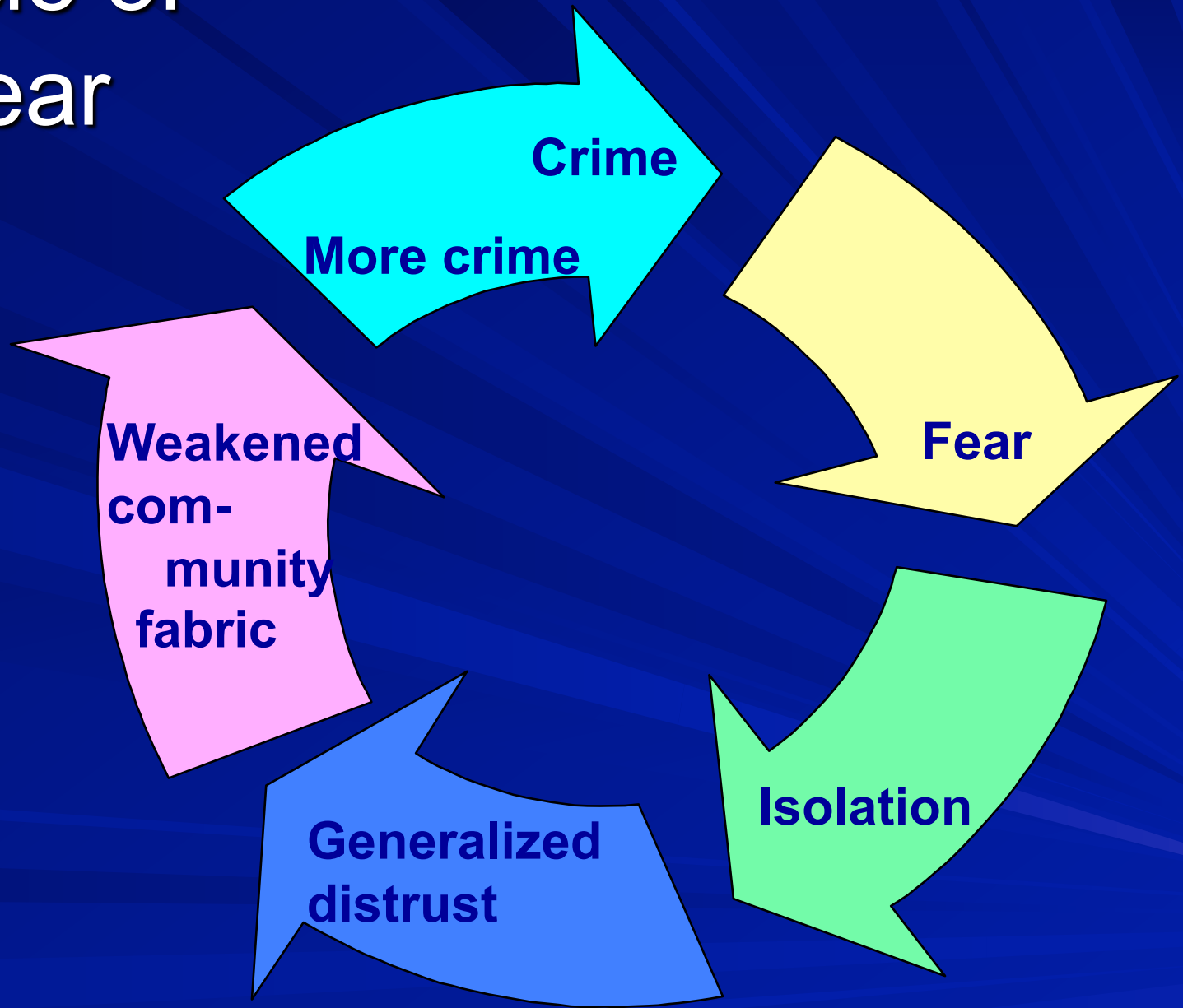
- Less travel- more local services
- Opportunities to look for employment locally and show strengths and willingness to contribute
- Access to education, probation, mentoring, health care, community support.
- Maybe opportunities for client's families to obtain services- How will this be done?

NeON Outcomes?

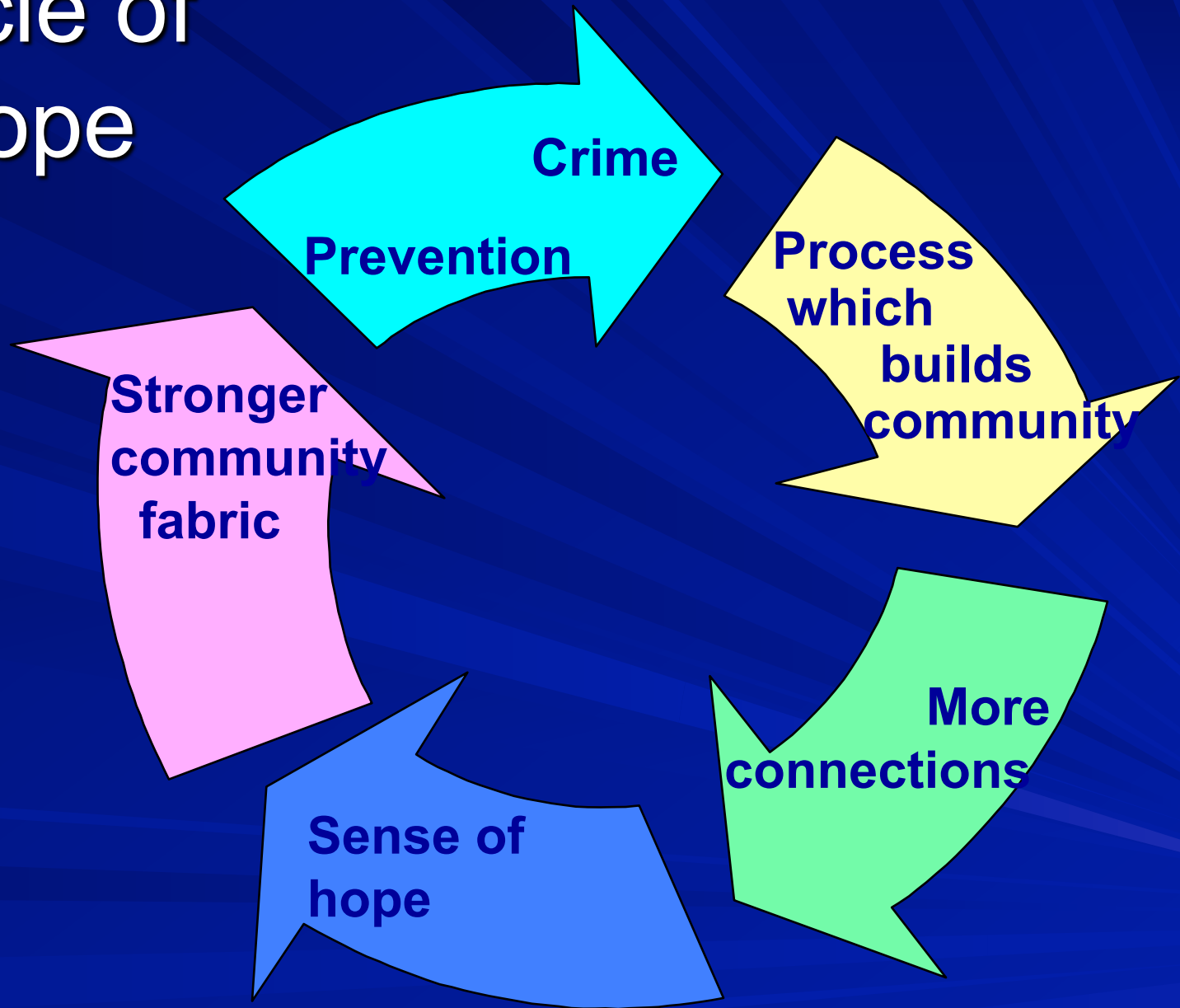
- NYC is home to a uniquely strong network of community-based and business organizations.
- Clients who feel invested in their community are less likely to engage in criminal activity
- Clients who find work, continue their educations, support their families and contribute to the well being and stability of their neighborhoods help build stronger, safer and more vibrant communities.



Cycle of Fear



Cycle of Hope





“ In nature,
nothing
grows from
the top
down.”

The Chandler Center of
Community Leadership